

The Surgical Essentials

Magnificent Seven by Trycare



Essentially Trycare



Introducing the Magnificent Seven Surgical Essentials

Our special selection of products, featuring our most popular bone augmentation materials available in equine, porcine, bovine, natural or synthetic. A selection of tailor made drape and gown kits plus brushes and gloves, all to keep you and your patient protected. A variety of sterile solutions and giving sets for patient prep and instruments, plus our choice of sutures available in all sizes and lengths.

1. Bone Materials
2. Draping & Gowning Kits
3. Giving Sets
4. Sterile Solutions
5. Scrub Brushes
6. Gloves
7. Sutures



1 Bone Materials



OsteoBiol® Gen-Os

A natural replica of autologous bone. Conserves the same intimate structures (matrix) and porosity: and has highly osteoconductive properties.

Porcine / Equine	0.25g Each
Porcine / Equine	0.5g Each
Porcine / Equine	1.0g Each
Porcine / Equine	2.0g Each

1 Bone Materials



OsteoBiol® Lamina

A cortical bone of heterologous origin. It has a semi-rigid consistency and can be grafted without hydration.

Porcine / Equine	Soft Curved
Porcine / Equine	Semi Soft
Porcine	Semi Soft
Porcine / Equine	Standard
Porcine / Equine	Fine
Porcine / Equine	Fine Oval

1 Bone Materials



OsteoBiol® mp3

90% pre-hydrated collagenated cortico-cancellous granules and 10% added collagen gel. Particle Size: 600-1000 µm.

Porcine	0.25cc Pack of 3
Porcine / Equine	0.5cc Pack of 3
Porcine / Equine	1.0cc Pack of 3
Porcine / Equine	1.0cc Each
Porcine / Equine	2.0cc 1000-2000
Porcine / Equine	2.0cc 600-1000

1 Bone Materials



OsteoBiol® GTO

80% pre-hydrated collagenated cortico-cancellous granules and 20% Thermo Sensitive Gel. Particle Size: 600-1000 µm.

Porcine / Equine	0.5cc Each
Porcine / Equine	2.0cc Each

1 Bone Materials



OsteoBiol® Evolution

Heterologous mesenchymal tissue membrane. Approximate resorption time: Fine 3 months. Standard 4 months.

Porcine Std	20 x 20 Each
Equine Std / Fine	20 x 20 Each
Porcine / Equine	30 x 30 Each
Equine Fine	40 x 40 Each
Equine Fine	80 x 60 Each
Porcine / Equine	25 x 35 Each

1 Bone Materials



Augma™ Bond Apatite®

Bond Apatite bone graft cement is a combination of a biphasic calcium sulphate cement matrix with a hydroxyapatite granule formula. Less than 1 minute is required for graft placement and stabilisation.

Synthetic	Syringe 1.0cc Each
-----------	--------------------

1 Bone Materials



Rocky Mountain Bone

Irradiated Allogenic Cancellous Bone and Marrow Graft Material.

Granules	0.25g Each
Granules	0.5g Each
Granules	1.0g Each
Granules	2.0g Each
Granules	3.0g Each

1 Bone Materials



NuOss® Bone

A natural porous bone mineral matrix, produced by the removal of all organic components from bovine bone. Due to its' natural structure, NuOss is physically and chemically comparable to the mineralised matrix of human bone.

Granules	0.25g Each
----------	------------

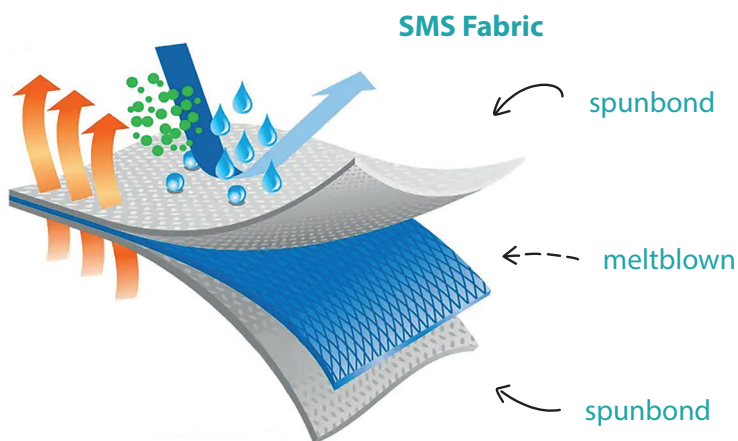
Extra Protective Draping and Gowns

Our “high risk” drapes and gowns are based on a 3 layer laminate of breathable, but repellent materials that give the best available protective barrier. This combination also provides protection and more comfortable working conditions when wearing for longer periods of time.

Patient Drapes and Gowns

Our gowns and patient drapes are made using SMS. This is a tri laminate non woven fabric made up of a top layer of spunbond polypropylene, a middle layer of meltblown polypropylene and a bottom layer of spunbond polypropylene.

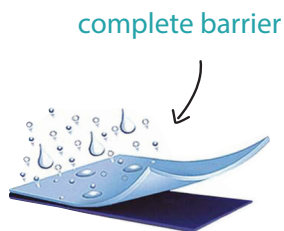
SMS has exceptional physical properties alongside barrier qualities. Features include high tensile strength, softness, comfort, breathability, wearability, and it is also lightweight. In addition it acts as a water-repellent, and a barrier against bacteria, blood and other liquids as well as perspiration.



- Lightweight
- Soft
- Breathable
- Nontoxic
- Anti-bacterial
- Anti-chemical agents
- Non-irritant
- Water repellent
- Skin friendly

Ancillary Drapes

Other drapes such as surface drapes and handle covers are 2 ply laminate. 2 ply laminate is waterproof and absorbent. The layer of PE film is impervious creating a complete barrier and the non-woven material on the top is absorbent to collect any fluids.



Compliant with EN13795 and CE Marked 93/42/EEC.
Protection and performance without compromise
for you, your team and your patients.



2 Draping & Gowning Kits



Surgikit DP0001-U

- | | |
|---|--|
| 1 x Hygovac Aspirator Tip | 1 x Aperture Patient Drape (160 x 210cm) |
| 8 x Adhesive Strips | 4 x Gauze Squares |
| 3 x Surface Drapes (Adhesive 60 x 80cm) | 1 x Tegaderm Site Dressing (15 x 20cm) |
| 1 x Hygosurge Suction Tip | 6 x Hand Towels |
| 1 x Instrument Tray | 1 x Surgeons Cap |
| 1 x Motor Unit Cover | 3 x Hose Covers |
| 1 x Incineration Bag | 1 x Plastic Tweezers |
| 4 x Handle Covers (Adhesive) | 3 x Surgeons Gowns Large |
| 2 x Nurses Hats | |
| 1 x Patient Cap | |

2 Draping & Gowning Kits



Surgitwo DP0002-U

- | | |
|--|---|
| 1 x Patient Cap | 8 x Adhesive Strips |
| 1 x Aperture Patient Drape (160 x 210cm) | 3 x Surface Drapes (Adhesive 60 x 80cm) |
| 8 x Gauze Squares | 1 x Hygosurge Suction Tip |
| 1 x Tegaderm Site Dressing (15 x 20cm) | 1 x Instrument Tray |
| 4 x Hand Towels | 1 x Motor Unit Cover |
| 1 x Surgeons Cap | 1 x Incineration Bag |
| 3 x Hose Covers | 1 x Mayo Stand Cover (50 x 60cm) |
| 1 x Plastic Tweezers | 4 x Handle Covers (Adhesive) |
| 2 x Surgeons Gowns Large | 2 x Nurses Hats |
| 1 x Hygovac Aspirator Tip | |

2 Draping & Gowning Kits



Endokit DP0003-U

- | | |
|----------------------------------|--|
| 1 x Aperture Drape (160 x 210cm) | 3 x Surface Drape (Adhesive 60 x 80cm) |
| 4 x Hand Towels | 1 x Hygovac Aspirator Tip |
| 4 x Hose Covers | 1 x Instrument Tray |
| 2 x Surgeons Gown Large | 1 x Incineration Bag |
| 1 x Hygosurge Suction Tip | 4 x Handle Covers Adhesive |

2 Draping & Gowning Kits



Drape Kit CD2744

- | | |
|--|---------------------------|
| 1 x Aperture Patient Drape (160 x 210cm) | 1 x Hose Cover (Adhesive) |
| 2 x Surface Drapes (75 x 75cm) | 2 x Handle Covers |
| 2 x Surgeons Gown Large | 1 x Plastic Tweezers |
| 1 x Surgeons Cap | 4 x Hand Towels |
| 3 x Nurses Hats | 4 x Gauze Squares |
| | 1 x Gallipot (60ml) |

3 Giving Sets



W&H Implant Motor Complete Giving Set

Implantmed	Pack of 6
Elcomed	Pack of 6
Spray Tubing 2.2m + luer lock	Pack of 10

3 Giving Sets



Omnia Complete Giving Sets

Complete Irrigation tubing to use on W&H machines. Runs from saline to motor and then out to the handpiece.

To fit W&H Implantmed	Each
To fit W&H Elcomed	Each

3 Giving Sets



NSK Complete Giving Sets

Complete Irrigation tubing to use on NSK machines. Surgic XT, Surgic XT Plus, Surgic Pro, and VarioSurg surgical systems. Same set used for NSK VarioSurg Bone Surgery Kit.

To fit all NSK	Pack of 5
----------------	-----------

3 Giving Sets



Nouvag Universal Complete Giving Sets

Complete Irrigation tubing. Universal set compatible with most motors.

2 way	Pack of 10
2 way	Each
3 way	Each

4 Sterile Solutions



Sterile Saline Sodium Chloride Solution 0.9%

For cleaning wounds and flushing away tissue debris and blood during surgical procedures. Can also be used for soaking surgical dressings and instruments.

Bag 100ml	Each
Bag 500ml	Each
Bag 1 Litre	Each
Bag 5 Litre	Each

4 Sterile Solutions



Sterile Water

Sterile water used for irrigation and ampoules for to be used for injections.

Ampoules 5ml	Box of 10
Bottle 1 Litre	Each
Bag 5 Litre	Each

5 Scrub Brushes



Disposable Pre-Op Scrub Brushes

Surgical Scrub Brush. 4% Chlorhexidine treated combination sponge and nail brush to clean surgeons hands before operative procedure

4% Chlorhexidene | Pack of 25

6 Gloves



Biogel® Dental Latex Sterile Gloves

High quality surgical gloves. Easy to don, offering optimum fit and comfort, foreign allergens and protein free. Coated powder-free sterile.

Sizes 5.5 - 9.0 | Boxes of 10

6 Gloves



Premier® Nitrile Blue Sterile Gloves

Provide good sharps puncture resistance and protection during tasks which may pull, stretch or twist the glove whilst in use. Powder free. Finger tip textured. Ambidextrous fit.

Size Small	Box of 50
Size Medium	Box of 50
Size Large	Box of 50

7 Sutures



Ethicon® Mersilk

Braided, natural material

Non-absorbable. Will require removal. Provides prolonged tensile strength retention in tissue for up to 3 months.

Ethicon® Monocryl

Monofilament with high knot security

Smooth surface means minimal tissue drag and tissue reaction. Mass absorption complete between 90 and 120 days.

Ethicon® Vicryl Rapide

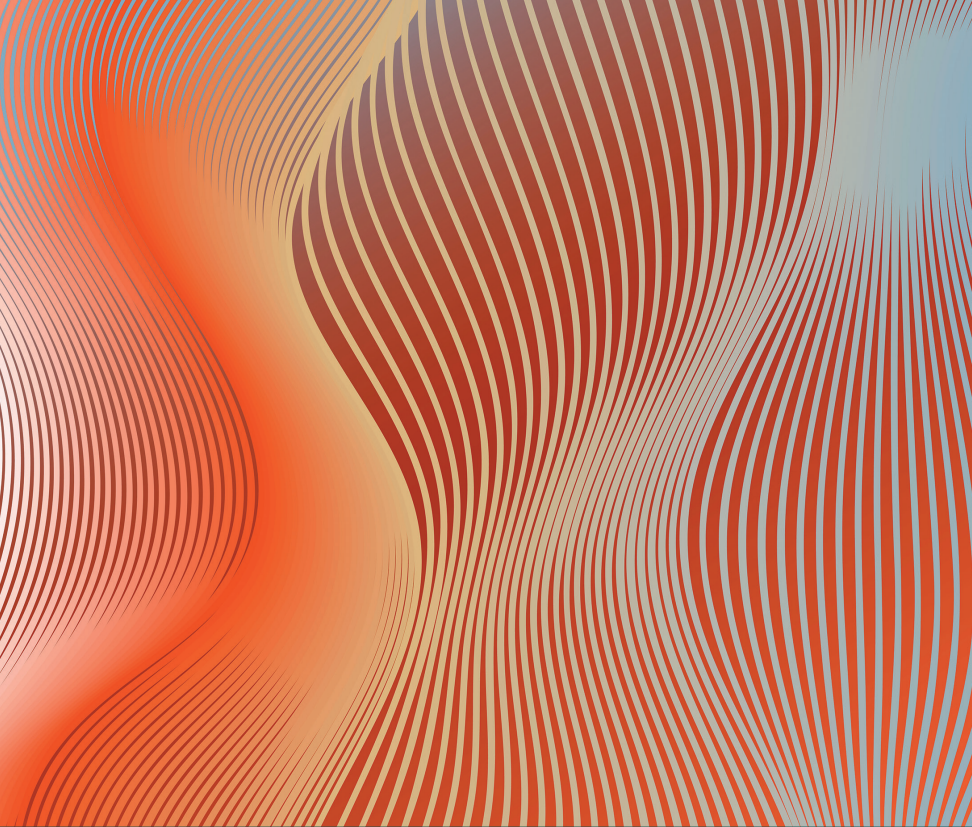
Faster absorbing synthetic material

Identical composition and ease of handling as coated. Excellent knot snug down. Absorption complete by 42 days.

Ethicon® Vicryl

Braided, synthetic, absorbable suture

Excellent handling and knotting. Minimal drag, sawing and tissue reaction. Mass absorption complete between 56 - 70 days.



Dynamic. Reliable. Honest.

Trycare is grounded in innovation, service and best practice. We pride ourselves on being dynamic, reliable and most importantly of all honest! Incorporating these values into our business activities, working to provide products, services and technologies that address a variety of dental issues while rallying to the slogan “For the Dentists of tomorrow”

Discover  the magic of **Trycare**

